



The Slip Trail

The Newsletter of New Mexico Potters & Clay Artists / www.nmpotters.org P.O. Box 26811 Albuquerque, NM 87125

January 2011

New Mexico Potters & Clay Artists

"..to promote excellence and creativity in the clay arts, and to further their understanding and appreciation throughout New Mexico...."

In this issue:

- Message from our president
- 2011 Bill Armstrong Grant
- Sixteen Ways to Contribute to NMPCA
- FAQ
- New Membership Website
- Getting to know you
- New Members
- Shows and Announcements
- Don't Forget to Renew!

"People say 'Why do you make pots?' Because I'm compelled to - life isn't right without it."

-David Roberts

May your 2011 be "Right" every day!

Christina Sullo
Slip Trail Editor
505-803-1675
christinasullo@live.com

NMPCA President's Message

by our president, Judy Nelson-Moore

Happy New Year, fellow clay enthusiasts! I believe most of us are making a New Year's Resolution to spend more, better, and/or happier time with hands in clay in the coming year. I know I am.

At the end of one year and the beginning of the next, we also frequently reflect on what was accomplished in the previous year and what we want to see in the coming year. Let's think about NMPCA in 2010. Here's a list of some of our accomplishments: Ghost Ranch volunteer camp, first swap meet at annual meeting, Ghost Ranch New Mexico Connections workshop, Scholarships for Critical Santa Fe, brochures for NMPCA, welcomed new members to Board, started or upgraded services to members: regular enews, new membership website; refined concept of Slip Trail to a quarterly publication, started Blog about NMPCA activities. I hope all members were able to enjoy and participate in some of these activities.

And here's what we thinking about doing so far for 2011: Expand membership website to include such things as forums, directory reference, event registration on-line; add features to claystudiotour.com starting with a map; hold an all-member exhibition "Celebration of Clay" in June, hold the annual workshop at Ghost Ranch with a guest artist in September; publish the quarterly Slip Trail journal; award the 2011 Armstrong Grant; hold an annual meeting and party in June/July; continue our ongoing and lively enews email exchange.

Continued on page 2

2011 Bill Armstrong Grant

by Daisy Kates

Last Reminder: 2011 Armstrong Grant Applications Due Soon

The deadline for applications for the Bill Armstrong Grant for 2011 is Feb. 1st. A simple outline is described on our website (www.nmpotters.org). Just click on "Grant" for the information. Clear directions are provided. The monies will be made available by June 30th after the applications are researched and the Board makes the final decision on the recipient. Site visits are made whenever possible as part of this process.

Funds may be used for equipment, supplies, workshop instructors and special programs

Continued on page 3

NMPCA President's Message

(..continued from page 1)

Myself and fellow board members really appreciate when members give us feedback about how they like the activities and what they would like to see. Here's a couple of recent comments: "I wanted to first compliment you on the website upgrade and just over all up to datedness and modern/creative look it has. ...Also I wanted to extend that complimentary comment to the ... organization. I am currently disgruntled with another organization for artists that I was accepted into. Their website is out of date, their correspondence is late and often misleading. Their fee is [a lot more than NMPCA's]... "

Another: The new "membership ... site is awesome!"

One of the issues for NMPCA this year and continuing into next year: We need something to keep NMPCA alive and well: More members who are willing to dig in and roll up their sleeves. This is a completely volunteer organization. If you think something should be done to meet your needs better, don't expect anything to happen unless you are willing to step up to the plate and help make it happen. This means make positive suggestions, serve on committees, negotiate solutions with other members, and spend time on tasks to which you can lend your expertise or time. It's not fair to say that you don't like what the organization does unless you are willing to get in and help change it. Yes, it takes your time. Yes, it requires your attention. Is it worth it? In the short run...we all have our days of saying we don't have time and we have other things we HAVE to get done. In the long run and in the big picture, when you think about the need for creative thinking in our lives and in our society...yes, it is worth it. Contact a board member anytime soon...see our contact information in this issue and every issue of the Slip Trail.

My challenge to you: Add these three resolutions to your list of New Year's resolutions for 2011:

1. Renew your membership, if you haven't already, on the new membership website. Easiest way to find it is to go to our regular website at www.nmpotters.org and click on the link you see there for the membership website.

Continued on page 3

NMPCA Officers, Task Leaders and Board Members

Judith Nelson-Moore **President**
judy@nelsonmoore.com
505-466-3070

Michael Thornton **Vice President**
thesaurusstudio@aol.com
505-344-4644

Theresa Pesola **Secretary**
tapesola@unm.edu
505-842-0615

Cricket Appel – Treasurer
Cricketabq@gmail.com
505-922-1559

Layne Vickers-Smith **Membership Coordinator**
Santafepotter@comcast.net
505-983-7574

Lesley Mausolf **Email Editor**
sws@mountaincomm.us
575-437-6983

Teresa Tunick **Ghost Ranch Workshop**
tunick@swcp.com
505-986-8912

Christina Sullo **Slip Trail Editor**
christinasullo@live.com
505-803-1675

Barbara Campbell **Board Member**
bcampbell@valomet.com

Beverly Diamond **Board Member**
bed1@columbia.edu
505-424-9351

Linda Kastner **Board Member**
puppause@yahoo.com
505-989-9779

Kathe MacLaren **Board Member**
kathe1216@gmail.com
505-835-2406

Richard Mausolf **Board Member**
sws@mountaincomm.us
575-437-6983

Marilu Tejero **Board Member**
Marilu_ceramics@yahoo.com
505-463-6092

(..continued from page 2)

2. Make at least one positive contribution, small or large, to the NMPCA in 2011. See some ideas in the sidebar "...Ways..." in this issue.
3. Take part in at least one activity of the NMPCA to further your own clay work, and then give feedback about it by contacting a board member or a committee chair, writing an announcement to eNews, or writing an article in the Slip Trail.

Judy Nelson-Moore, NMPCA President, Santa Fe, jnm@nmpotters.org

2011 Bill Armstrong Grant (continued from page 1)

that will help to provide ceramic art education. The annual award is a minimum of \$500 and a maximum of up to \$1000. Proposals for lesser amounts would also be welcome for consideration.

Grants from previous years have been awarded to schools, after-school programs, community projects, programs for those with special needs, not-for-profit teaching facilities, etc.

Although this is not a huge sum of money, the grant can be a wonderful opportunity to help an organization purchase equipment or provide a special class. Please pass this information on to anyone you know who might benefit from the grant.

Questions can be directed to Daisy Kates at 867-3790 or daisyklay@yahoo.com.



Artwork by Abby Salisbury

Sixteen Ways to Contribute to NMPCA

1. Read a book about ceramics, attend a workshop, participate in a show, or discover/rediscover a good technique. Then write a review for The Slip Trail.
2. Help yourself be known in the ceramics community: Contact Christina Sullo to interview for the Slip Trail in the getting to know members feature.
3. Invite fellow members over to your studio/house to share a topic about ceramics, look at movies about ceramics. Set a date, make an announcement via eNews.
4. Have a skill or knowledge base you want to share? Have a previous life as a marketer, salesman, teacher, computer geek, engineer, bread-maker, cook, anything... Join a committee or contact a board member to see how to best contribute.
5. Want to show your work? Contact/form a show committee to help put on a show of member work.
6. Recruit a new member to NMPCA.
7. Want to learn about digital photography? Volunteer to help edit and size images for the websites, show and workshop publicity.
8. Want to learn how to build and maintain a website? Volunteer to help the webmaster (or to be the webmaster!)
9. Like to write? Contact the webmaster to moderate a discussion forum on the membership website on a topic of interest. Some ideas are safety practices, glazing, firing, tools for clay work, teaching ceramics, functional, sculptural, building

(continued on page 4)

Sixteen Ways (continued from page 3)

a website, aesthetics and sources of inspiration, economics of clay work ...

10. Know somebody you think would be a good workshop presenter? Contact the education committee for ideas, find a venue, and publicize to the members.
11. Find a really cool website that you think would be of interest to other people? Send an announcement to enews about it.
12. Add/Update a virtual studio tour page with pictures of your new work, how you made them, and what you think about making ceramics. (lots of members do this ... see the results at www.claystudiotour.com)
13. Volunteer to join the board or work on a committee to bring to fruition your ideas for the organization.
14. Know about publicity and marketing? Volunteer to help rewrite the brochure for NMPCA, prepare Celebration of Clay or Ghost Ranch news releases.
15. You're a graphic artist? Volunteer to help redesign the NMPCA logo.

Help us reach out to the 10% of members who don't have email...communicate with them by calling or writing, help them setup an email at the library, invite them to your place to use your computer.

FAQ about NMPCA

How do I renew my dues and/or studio fee?

Login to the membership website at <http://nmpca.onefireplace.org>, go to your profile (link on upper right) and click "renew until ..."

What if I don't have a password for the membership website or I forgot mine?

When you visit the website at <http://nmpca.onefireplace.org>, simply click on forgot password in the upper right. Enter the email you have given NMPCA, and you will be sent instructions how to reset your password or setup a new password.

Continued on page 5

New Membership Website

Do you use the internet? Doing some research (on the internet, of course) I find out that about 80% of the adult population in North America uses the internet. NMPCA is a very internet oriented group. Among our users, over 90% share their email address with us. Increasingly NMPCA uses the internet as a primary means to communicate among members. I can remember back in the old days when I was a NMPCA member living in Colorado, I didn't know anything about what was going on until I had read it after the fact in the Slip Trail. Now, I feel a strong connection with people all over the state. Every week I find amazing information about ceramics on the internet.

The Communications committee, consisting of Judy Nelson-Moore, webmaster, Christina Sullo, Slip Trail Editor, Lesley Mausolf, eNews coordinator, and Beverly Diamond, with the approval of the full board, has implemented a new membership website in recognition of the increasing role of the internet in all of our lives. Try it out...it's easy...its fun, and useful.

What you can do on the membership website:

- Renew your dues and studio tour fee. These are due on January 1st. If you haven't renewed by January 31st, we'll drop you from our rolls. As an incentive to try out the website, we will enter you into a drawing for a free Potter's Council calendar if you renew **THROUGH THE WEBSITE** by January 15.
- Update your own contact information for NMPCA. Keep your information accurate. Decide what you want to share with other members and what information you want to keep private.
- Find out how to contact other members through the searchable members directory.
- Add photos to your profile to share with others
- See minutes of board, committee or members meetings
- See back issues of eNews and the Slip Trail
- Future: Participate in special interest forum conversations with other members
- Future: See photo albums of NMPCA events
- Future: Sign up for shows and workshops



"St. Francis" by new member Joretha Hall.

FAQ *Continued from page 4*

What if I don't want to use a credit card on-line to renew my membership?

You can still renew your membership online and then mail your check. Simply select the "manual" renewal method and you will receive instructions how to mail your check.

How do I join the virtual online studio tour, www.claystudiotour.com?

You need to pay a \$15 studio tour fee, which can be done through the membership website. Then, prepare and send via email images, descriptions, contact information and artist statement according to the specifications that you can find at <http://www.claystudiotour.com/ToJoin.htm>.

How do I update my virtual studio tour page?

Send via email your updated images, descriptions, contact information and/or artist statement according to the specifications that you can find at <http://www.claystudiotour.com/ToJoin.htm>.

How do I find members I met / I want to meet?

Use the new members-only directory on the membership website. After you login to the membership website, you will find it on the members-only menu.

How does a new member join NMPCA?

Until we add new membership enrollment to the membership website, new members still need to enroll by contacting the membership coordinator. Information on how to contact her is on our regular website, www.nmpotters.org, on the membership tab.

How do I find out what is going on in the NMPCA?

Contact one of the board members (see sidebar in every issue of the Slip Trail) or go to the membership website, log into the membership features, and see the members-only features showing Slip Trail archives, meeting minutes and eNews archive. Read your weekly eNews newsletters for recent ongoing updates.

Who are the board members of the NMPCA?

Board members of the NMPCA are elected by the membership at the annual meeting. Their names and contact information are shown in every issue of the Slip Trail. You can also find them on the members only directory of the membership website.



Work by new member
Rusty Spicer



Getting to know you ...

A visit with Rusty Spicer in Santa Fe.

How did you first get interested in clay?

I took a clay class in hand building and wheel throwing at Santa Fe clay in April '09.

Describe your studio.

I use Santa Fe clay as my studio.

Describe your work.

Describing my work is difficult...if I am throwing on the wheel I use a dark brown clay with a white slip. I then stretch the cylinder into a bowl shape, the problem is I can never touch the outside of the bowl as the slip is very wet.

When you are not working in your studio, what do you enjoy?

Biking, swimming, trying to stay in shape, cooking, reading and going to art galleries..

Do you play music in your studio?

No.. as I am at Santa Fe Clay with several others and finding the right music for all of us is just not possible...LOL

What other pottery do you have in your home?

Mike Jabbur, Tadashi Ito, Kiyoharu Ichino, and Akira Satake (Touching Stone Gallery is my favorite for clay).

Continued on page 6

WELCOME NEW MEMBERS

By Layne Vickers Smith, Membership Coordinator

Pam Bennett-Cumming enjoyed the fall Contemporary Clay Fair and joined NMPCA at the suggestion of long-time members Barbara Harnack and Michael Lancaster. She had a studio in her Washington state home. “We moved here (Cerrillos) at the beginning of the year (2010), and like most everyone we know, are still in the process of setting everything up. The studio (Alta Artworks) is going now, but I’ll be firing elsewhere till the kiln is built, or we come across a good working used one. We are off the grid, so everything has to be propane.” Inspired by the rocks and forms of Northern New Mexico, she works in functional and nonfunctional clay, both high and low fire, thrown and handbuilt.

J. Marcos Carrera of Santa Fe sculpts in both clay and metal. “I instantly took to the earthiness of clay at my very first pottery class,” he writes. “I love color and create happy pieces. My other artistic love is welding metal sculptures. I use broken and discarded gardening tools, implements, and even kitchen utensils to recycle into ‘GARDEN ART.’” His cheerful creations are gracing gardens from Santa Fe to Sanibel Island, Florida.

Sandy Duval, also of Cerrillos, works out of an original miner’s cabin on Route 14 on the south end of Madrid. She is interested in contemporary artifacts and functional stoneware. She makes musical clay sculpture and one-of-a-kind teapots.

Joretha Hall creates handbuilt clay figures, animals, luminarias, churches and other small items at Clay Companions, her Santa Fe studio. The figures are in a variety of sizes from 10 to 25 inches.

Pam Mackellar of Corrales handbuilds and sculpts non-functional forms. She likes to work with paperclay.

Junko Okabe-Hopkins is an Albuquerque sculptor who makes both abstract and figurative pieces in her Sunbird Studios. She designs wall pieces and free standing work.

Rusty Spicer of Santa Fe has only been working in clay for 20 months. “Took a workshop in Taos from a man named Akira Satake and from that workshop I found my voice,” he writes. Obviously, his is a loud voice—reports say he sold more than 40 pieces at the Santa Fe Clay sale in December. Let’s hope his beginner’s luck rubs off on the rest of us!



Screen shot of the new Membership Website



Additional work by new member Rusty Spicer



Work by Akira Satake—
one of Rusty’s teachers and
inspiration.

SHOWS and ANNOUNCEMENTS

Sara D'Alessandro

"Emanations of a Fettered Mind"

On the back of the card it says her work can be "viewed from your vehicle"

at Mudwasp Sculpture Site
32 Reed Road
Cuba, NM

2/10 mile East off US 550

www.saradalessandro.com

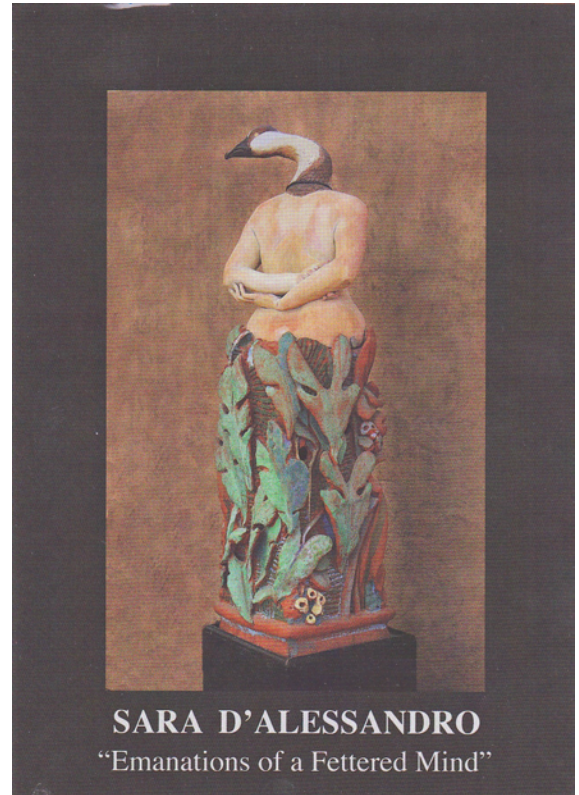


photo by Gyokossy Zsombor



“Wild Horse Zonda”

Anne Russell

“**Inner Child**”, Fuller Lodge Art Center, Los Alamos, NM January 7 - February 19, 2011. Opening reception January 7 from 5-7pm.

University of Dallas Regional Juried Ceramics Competition, January 21- March 4, 2011. Opening reception February 4 from 6:30-9. The show will also be traveling to Wichita Falls Museum of Art at Midwestern State University in Wichita Falls, Texas. The show will continue May 20 – July 8, 2011 in Wichita Falls.

Anne Russell
3137 Vista Sandia
Santa Fe, NM 87506
cell: 505 660-3985
email: annerussellart@gmail.com

www.annerussellart.com/

DON'T FORGET TO RENEW!

Thanks to those who've already paid their 2011 NMPCA membership dues through the website. You're entered into a drawing for a beautiful Potters Council calendar to get your New Year off to a colorful start.

If you haven't yet paid, please pay online before January 15 to be eligible for the drawing. Dues will be accepted until the end of the month.

You can renew online on our NMPCA membership website by logging in using the email we have on file for you: and password. If you don't have a password for the NMPCA members website, simply press the forgot password link and we will send you one. Click on <http://NMPCA.onefireplace.org> to get started. You can make your dues payment with a credit card via PayPal (you don't need to have a PayPal account), or simply indicate "manual" renewal and we'll email you an invoice with instructions to send your check in the mail. While you are there, you can check out the other features of our new membership website.

We hope you will take advantage of this easy renewal method. If you don't want to use the membership website, you can always renew by mail. Please send your renewal dues (\$25/year for your membership and \$15 for the studio tour) to NMPCA Membership, 624 East Alameda, #12, Santa Fe, NM 87501. If you have any questions, please call me at 505-883-7574.

Here's to another great year of slinging mud!

Be sure to check out Virtual
Studio Tour updates on our
website:
www.claystudiotours.com